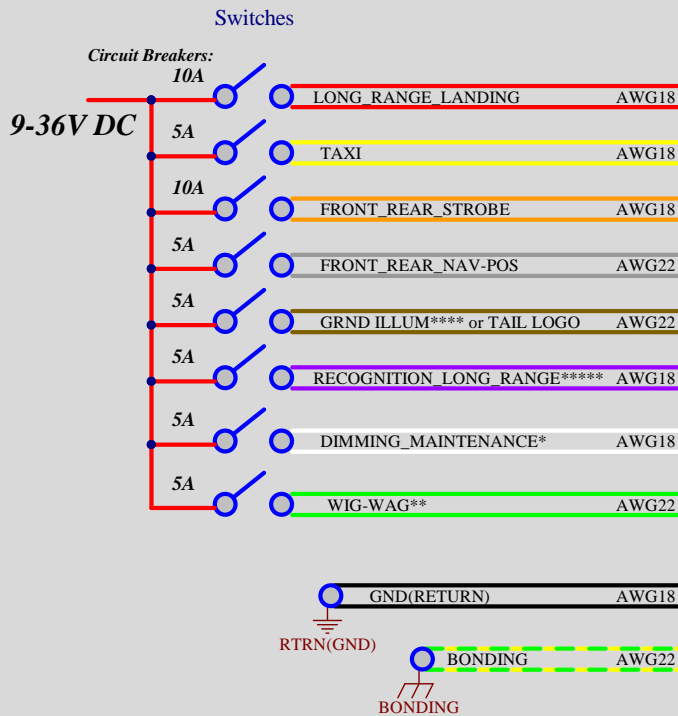


Used Wires:
 AlphaWire 5855, AWG 22 (19x34AWG), 600VDC, -60 to 200°C, PTFE
 AlphaWire 5857, AWG 18 (19x30AWG), 600VDC, -60 to 200°C, PTFE



NOTES:

RECOGNITION_LONG_RANGE***** priority above Landing mode

GRND_ILLUM**** - disable when Long Range Landing mode is activated.

SYNC*** - Synchronisation line, connect left and right sides together.
 Do not connect any another load or power supply to this SYNC wire.

WIG-WAG** - WigWag function available when TAXI activated only.

DIMMING_MAINTENANCE* is a dual function input.

In case when activated "DIMMING_MAINTENANCE" AND another switch(switches), ZipTip provide a dimming of selected mode, selected mode has around 25% intensity from nominal.

In case when ONLY "DIMMING_MAINTENANCE" switch activated, ZipTip provide a MAINTENANCE function: All LEDs shine with minimum intensity in steady mode. this mode was developed for pre-flight check.

AWG18	PIN 1 - Reserved for StandBy
AWG18	PIN 2
AWG18	PIN 3
AWG18	PIN 4
AWG22	PIN 5
AWG22	PIN 6
AWG18	PIN 7
AWG18	PIN 8
AWG22	PIN 9
SYNC***	AWG22
AWG22	PIN 11
AWG18	PIN 12

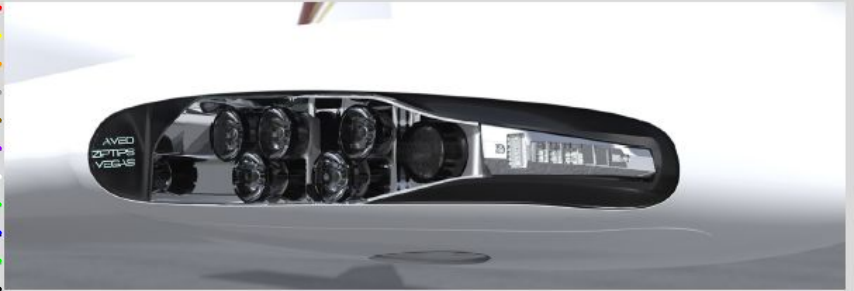
Molex Female Connector:
36792-1201



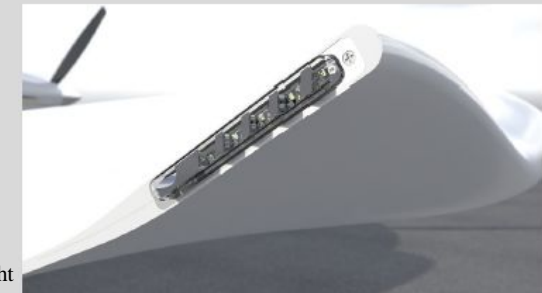
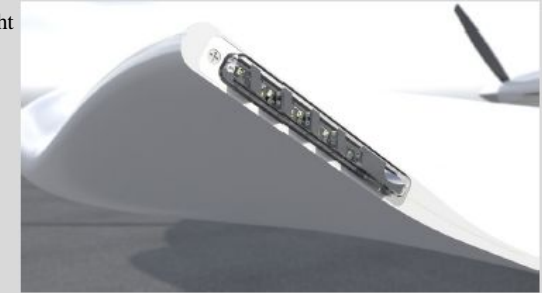
Crimp terminal: Molex P/N:
 36799-0001 for AWG16/18
 36799-0002 for AWG20/22
 Hand Crimp Tool:
 638258000 for 36799-0001
 638257900 for 36799-0002

AWG18	PIN 1 - Reserved for StandBy
AWG18	PIN 2
AWG18	PIN 3
AWG18	PIN 4
AWG22	PIN 5
AWG22	PIN 6
AWG18	PIN 7
AWG18	PIN 8
AWG22	PIN 9
AWG22	PIN 10
AWG22	PIN 11
AWG18	PIN 12

Heathrink tube 12mm



Front Light
Rear Light



Rear Light
Front Light

